

every season is
BIKINI
season

*Les
Anders
type*

The background is black with a repeating pattern of small gold flowers and pink wavy lines with larger pink flowers. A central gold box contains the text "User guide" in a black cursive font.

User guide



BIKINI SEASONS

font duo



SUMMER HAS COME! BOHO GIRL IS GOING ON HER BEACH VACATION. RELAXED, SPONTANEOUS, FEMININE, IRREVERENT, THOUGH. LIKE A GIRL WITH A GIPSY SOUL, SHE JUST GRABS HER BIKINI AND TURNS AWAY! THIS IS THE NEW FONT DUO BY THE COUPLE COTO AND LUCIANO.

BIKINI INCLUDES A SANS VERSION, BASED ON THE PROPORTION AND STRUCTURE OF ROMAN CAPITALS, BUT WITH A CONTEMPORARY FLAVOR AND A CLEAN STYLE THAT GIVE THE TYPEFACE A CHIC TOUCH. THE OTHER VERSION OF THIS FONT DUO IS A MODERN CALLIGRAPHY SCRIPT OF HANDMADE STYLE. THE MIX IS JUST PERFECT: OPPOSITES ATTRACT CREATING A VERY INTERESTING COUNTERPOINT. **CAN YOU GUESS WHO IS THE DESIGNER BEHIND EACH STYLE?**

THIS FONT DUO IS INTENDED TO BE USED FOR POSTERS, LABELLING OR BRANDING. THE SANS AND SCRIPT STYLES ADD VISUAL HIERARCHY WHEN COMPOSING TEXT. FEEL THE FRESH FREE SPIRIT OF ITS OPENTYPE FEATURES AND ORNAMENTS!

EVERY SEASON IS BIKINI SEASON!



OPPOSIT

all

TES

tract

BIKINI SEASONS SCRIPT

SET INCLUDES 923 GLYPHS. OPENTYPE
CHARACTERS MAY ONLY BE ACCESSIBLE VIA
OPENTYPE-AWARE APPLICATIONS.

∞ BASIC ∞

A B C D E F G H I J K L M N O P Q R S T
U V W X Y Z
a b c d e f g h i j k l m n o p q r s t u v w x y z

∞ ALTERNATES ∞

•SWASH•

A B C D E F G H I J K L M N O
P Q R S T U V W X Y Z & &

•SALT•

a b c d e f g h i j k l m n o p q r s t u v w x y z

•INIT•

a b c d e f g h i j k l m n o
p q r s t u v w x y z

•END•

a b c d e f g h i j k l m n o p q r s t u
v w x y z &

BIKINI SEASONS SCRIPT

HOW TO USE

•CONTEXTUAL ALTERNATES•

Boho Boho
Chic Chic

•BEGINNING AND ENDING•

Your gipsy soul
Your gipsy soul

BIKINI SEASONS SCRIPT

HOW TO USE

•BEGINNING AND ENDING SWASHES•

beach beach

ocean ocean

summer

summer

BIKINI SEASONS SCRIPT

∞ LIGATURES ∞

• LOWERCASE •

aa av avz aw ax az azv azz bb br
br bw bx bz bzz cc cr cv cw cx cz
czz dd dr dv dw dx dz dzz ee ef ev
evz ew ex ez ezv ezz ff fr fv fw fx
fz fzz gr gv gw gx gz gzz hv hw
hx hz hzz is iv ivz iw ix iz izv izz
jr jv jw jx jz jzz kr kv kw kx kz
kzz ll lv lw lx lz lzz mm mv mw
mx mz mzz nv nw nx nz nzz oo ov
ovz ow ox oz ozv ozz pp pr pv pw
px pz pzz qv qw qx qz qzz rv rw rx
rz rzz sv ss sv sw sx sz szz the tr
tl to tw tx tz tzz uv uz uvz uw ux uz
uzv uzz vz vzz wx wz wzz xw xx
xz xzz yv yw yx yz yzz zv zv zw
zx zz

BIKINI SEASONS SCRIPT

LIGATURES

•UPPERCASE•

Aj Ar At Dr Dr Fr Fr Ki Kl Kr
La Le Ll Li Ll Lo Lu Pr Sr Sw
Tr Ur Ux Uz Ur Vu

HOW TO USE

•DOUBLE LETTERS AND OTHER FEATURES•

hippie hippie
dress dress

La isla free
La isla free

BIKINI SEASONS SANS

SET INCLUDES 412 GLYPHS. OPENTYPE CHARACTERS
MAY ONLY BE ACCESSIBLE VIA OPENTYPE-AWARE
APPLICATIONS.

∞ BASIC ∞

•UPPERCASE•

A B C D E F G H I J K L M N
O P Q R S T U V W X Y Z

•LOWERCASE•

A B C D E F G H I J K L M N
O P Q R S T U V W X Y Z

∞ MONOGRAMS ∞

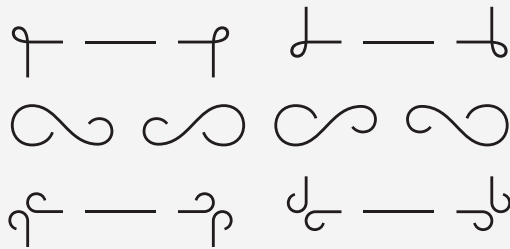
AA AB AD AF AH AK AL AM
AN AR AS CD DD HB HD
HE HF MB ME MU NB ND NE NF
OO OG OO OQ UP

ORNAMENTS & BORDERS

BIKINI SEASON SCRIPT



BIKINI SEASON SANS



HOW TO USE

• PERFECT MATCH •



∞ HOW TO USE ∞

• PERFECT MATCH •

Dana Olson
∞ HANDMADE JEWELRY

BETT

Sage

TER
ther



DESIGNED WITH PASSION AND LOVE
BY COTO & LUCIANO

*Les
Andes
type*